

Silver-Studded Blue

(*Plebejus argus*)

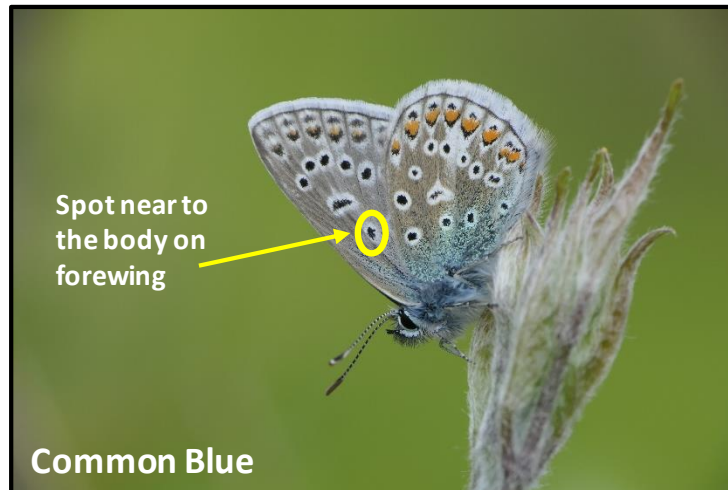
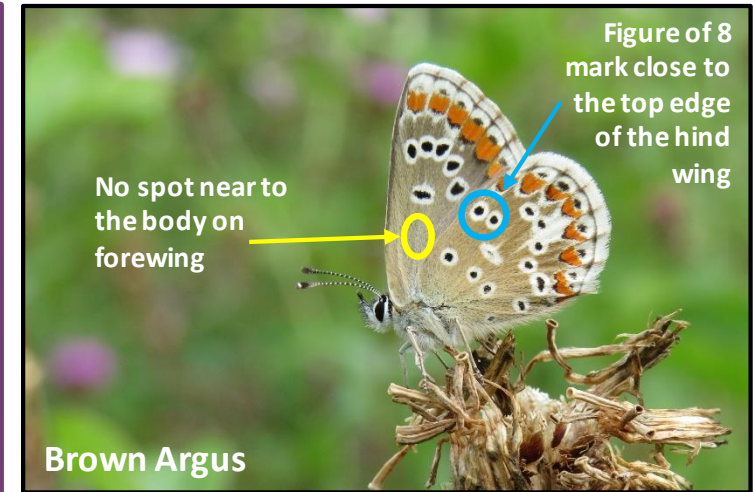
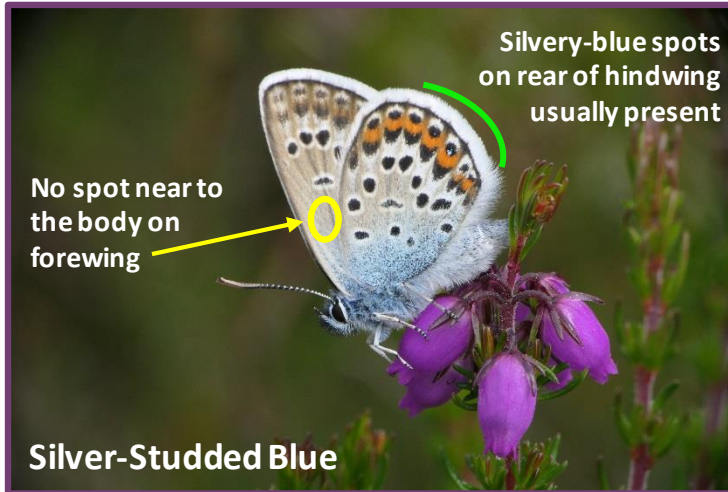
Identification and distinction from other blues on heathland

THAMES BASIN HEATHS
PARTNERSHIP



If you encounter blue butterflies in any sizeable number on heathland, they are likely to be silver-studded blues.

However, if you are able to get a closer look, there are some key differences to look out for that can clinch a definitive ID.



Thames Basin Heaths Partnership

Sharing the story of our heathlands across Surrey, Hampshire & Berkshire

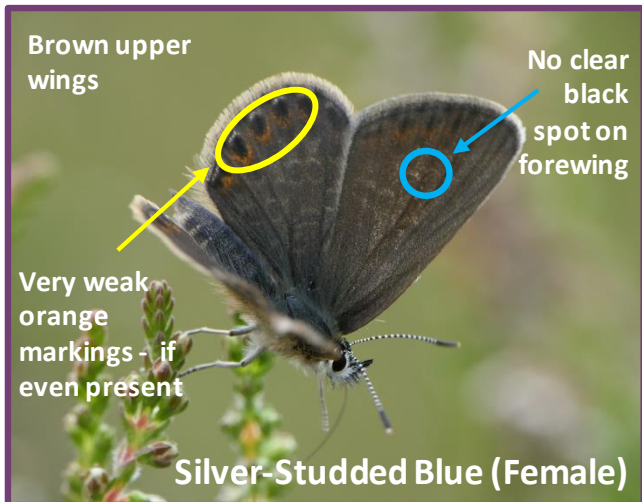
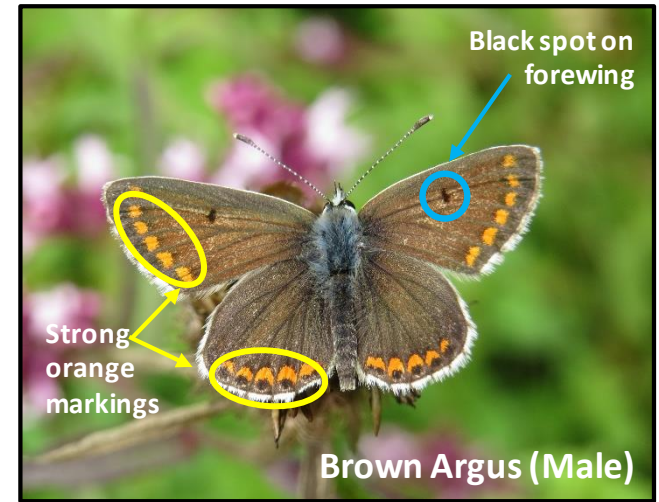
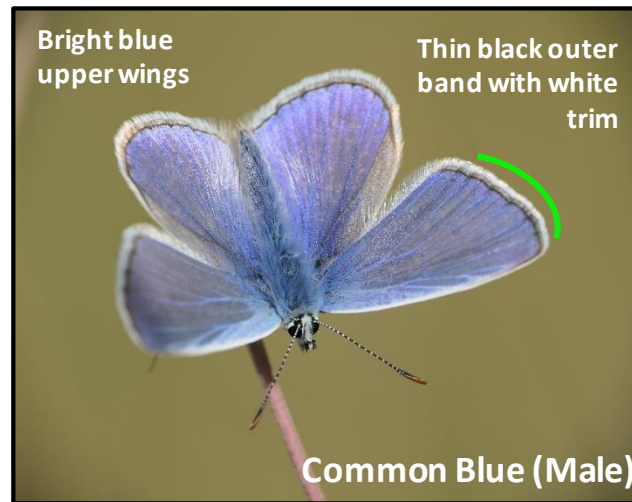
Underside

V2 - 2021

All photos: ©Michael Jones

Silver-Studded Blue

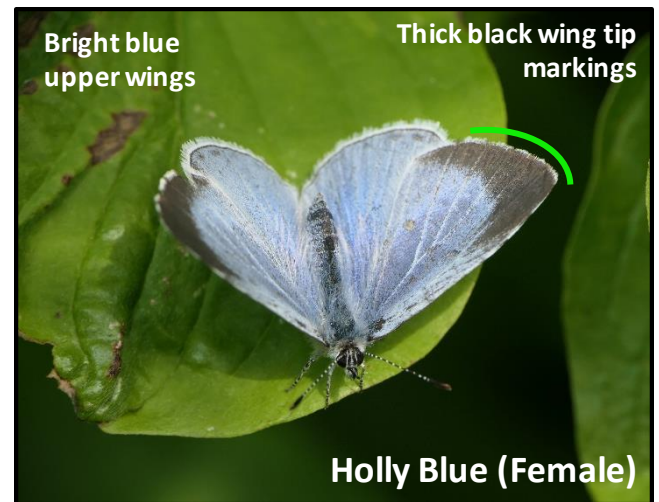
Silver-studded blues fly weakly and usually do not fly more than a few centimetres above the ground – often turning round if they encounter an obstruction.



Recording

Use this guide to confirm ID and then log all your sightings with the free *iRecord Butterflies* app.

For more information, check out: - www.tbhpartnership.org.uk/news/silver-studded-blue-butterfly



Thames Basin Heaths Partnership
Sharing the story of our heathlands across Surrey, Hampshire & Berkshire



Upperside