

Your name: _____

THAMES BASIN HEATHS
PARTNERSHIP



Heathland Nature Trail!

Heathlands are so colourful! Tick off all the colours you have seen today:



Have you heard any scratchy bird songs? You might have heard the rare Dartford warbler!



What does this unfurling bracken fern look like to you?



How many dogs have you seen?

Most plants here are small bushes. How do you think the plants were kept short in the olden days?

There are three types of heather, can you find them all?



Common heather



Bell heather



Cross-leaved heath



Have you seen a stonechat? They love to hop along the top of gorse bushes!

Have you seen any signs of a wildfire?

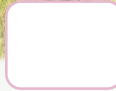
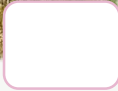
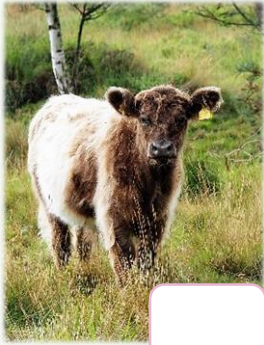
Sadly, wildfires damage the homes of ground nesting birds, insects, and reptiles.

Thames Basin Heaths Partnership

Sharing the story of our heathlands across Surrey, Hampshire & Berkshire



Have you seen these grazers?



They help us look after the heathland!

Draw your favourite thing that you have seen today!



How many pieces of litter have you seen?

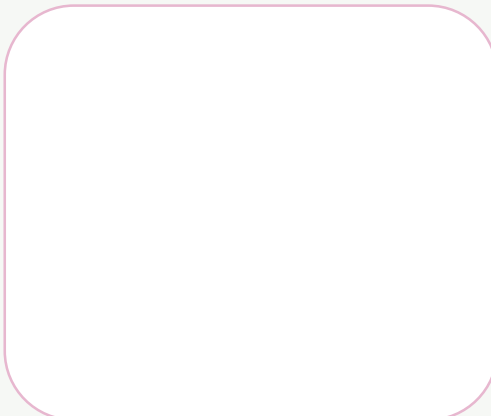


Make sure you put your litter in a bin, or take it home!

Can you hear any birds singing? What do you think they are saying to each other?



Have you seen any insects land on flowers? Draw what you have found!



What do gorse flowers smell like?



Why do you think common lizards love to lie on logs and boardwalks?

